

# Annuity News

October 2023 No. 108

G government

S superannuitants

A association

Founded in 1920



## Featuring

News about your Association and what we are up to, as well as other useful information.

Call the GSA free on 0800 888 472

Visit us at [www.gsa.org.nz](http://www.gsa.org.nz)

## MESSAGE FROM THE PRESIDENT



Following election at Council 2023 I am honoured to serve as GSA President for the next 12 months. I have served on the Board since 2017, the last 4 years as Vice President and I'm confident that this 'probationary' period has given me the required knowledge to lead your Board in representing the members of our organization.

I wish to acknowledge outgoing President Tony Hamilton and thank him for his dedication and service to the Association over a significant period which, with covid thrown into the mix, was quite a challenging time. Tony will continue an active involvement in the Northland branch and I'm sure will be available for advice should I need to call him.

Roger Openshaw is a new face on the Board but one which will be well known to you as the author of our centenary book published a couple of years ago. His in-depth knowledge about the history of GSA will be of enormous value to the Board and wider membership. I also welcome back Sandra Gusscott, John Beckham, Anne Gover, Michael Law, and Alan Peck to their Board roles. We are fortunate to have such an able group of people giving their skills and time to the GSA.

The Board are currently establishing committees, each charged with developing a programme of work to guide our actions over the next 12 months. These committees often meet via Zoom between Board meetings, and their plans will be tabled at the October meeting. There will be some major actions to achieve around developing a new strategic plan for 2024 -2027, along with some major changes to our constitution necessitated by the new legislation involved with the Incorporated Societies Bill.

Alongside this will be the ongoing struggle to get the 100% cost of living adjustment for **all** our members. Our Branches are key to a healthy organization and will be called upon to provide input into a lot of our decision making going forward. Your Board liaison member and I, look forward to continuing a strong connection with the troops at the coal face!

All the best for a safe and happy festive season.

**Alan Straker**  
**President**

## COUNCIL 2023

Delegates, life members, board members and national office staff met again at the West Plaza in Wellington for the annual Council meeting on September 9<sup>th</sup> and 10<sup>th</sup>.

We had two interesting Speakers Jane Wrightson from the Retirement Commission and Tim Mitchell from the GSFA.

Your branch committee appoints delegates to represent the interests of members of your local branch. Altogether there were 48 attendees. During the council meeting we held two workshops. One was to look at the GSA Strategy and the other was a discussion on how to increase our membership which currently at 30 September is 21,246 members. The next few years will be quite critical for the GSA especially for our smaller branches. This means that increasing our membership is a continuing priority.

We appreciate all of you for taking the time to participate in the Council meeting. It is a great opportunity to share your ideas and learn more about what's going on in branches around the country.

## GSA BOARD

Members of the Board for 2023-2024 were appointed at Council 2023. There was no election this year. Your new board is:

- President Alan Straker (Marlborough)
- Vice President Sandra Gusscott (Auckland)
- Alan Peck (Wellington)
- John Beckham (Southland)
- Michael Law (Waikato / King Country)
- Anne Gover (Southland)
- Roger Openshaw (Manawatu)



***On behalf of the Board and National Office we would like to wish you and your family a Merry Christmas and all the best for 2024***

## All COVID-19 requirements now removed



*Taken from an article from the office for Seniors.*

The last remaining mandatory requirements for 7-day isolation periods and the wearing of face masks for visitors to healthcare facilities have now been removed.

Wearing facemasks in healthcare settings is still strongly recommended and it's especially important when visiting people who are at higher risk of becoming seriously unwell, such as people living in aged residential care facilities, patients in hospital and those with other health conditions.

If you are feeling unwell or if you, or someone in your household develops one or more of the following symptoms for COVID-19, a runny nose, sore throat, cough, fever, vomiting, diarrhea, headache, loss of smell or taste, shortness of breath, take a Rapid Antigen Test (RAT).

RATs will remain free for everyone throughout 2023. You can find participating pick-up points for RATs and masks at [www.healthpoint.co.nz/covid-19](http://www.healthpoint.co.nz/covid-19) or by calling the RAT helpline on 0800 222 478 and choosing option 1.

Protect yourself, your whānau, and your community by getting immunised. Please don't visit others if you are sick.

Aotearoa New Zealand has good access to antiviral medicines for people who are most at risk of a serious health outcome or hospitalisation from COVID-19. Everyone over 65 is eligible and there is good evidence that antivirals can make a difference.

If your COVID-19 symptoms get worse, or you are concerned about someone you care for, you can call Healthline on 0800 611 116 anytime for free health advice and information. If it's an emergency, call 111.

### **The Personal Data Book**

This is a little book that can be used to record all your basic information for quick access.

It can be filled in online at [www.gsa.org](http://www.gsa.org), under the members tab.

Or ask your branch secretary to post you one.

The booklet covers:

- Personal Details
- Income and Banking
- Fixed Assets
- Liabilities, Investments and
- Insurances
- When I die and funeral wishes
- Your Will

#### **Useful websites for GSA members**

**Work and Income:** <https://www.workandincome.govt.nz/eligibility/seniors/index.html>

**Age Concern:** [https://www.ageconcern.org.nz/ACNZ\\_Public/Residential\\_Care\\_Common\\_Questions.aspx](https://www.ageconcern.org.nz/ACNZ_Public/Residential_Care_Common_Questions.aspx)

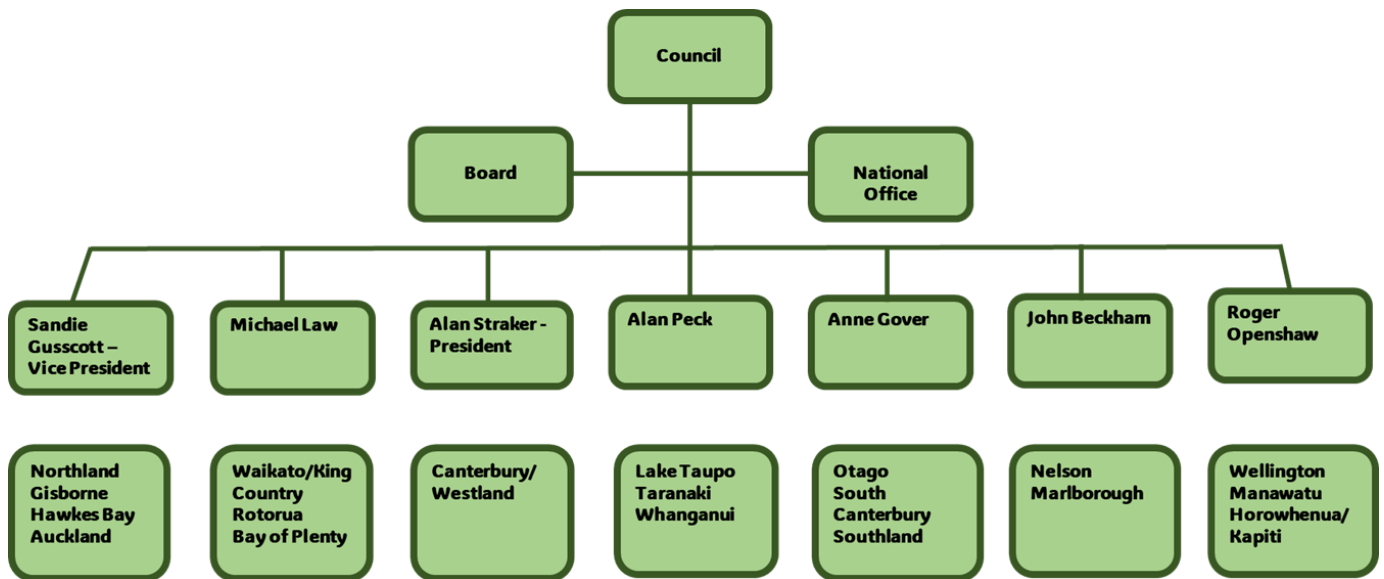
**Super Seniors:** <https://www.superseniors.msd.govt.nz/>

## Structure of the GSA

Have you wondered what the structure of the GSA looks like? We are a very flat structure overseen by the Board and a National Office which is made up of 2 part-time staff as well as the 19 branches across the country. Each of the board members acts as a branch liaison to the branches as shown below.

The office hours of the National office are Monday to Friday 9.30 to 2.30. The Executive Officer works Monday to Thursday from 8.30 to 4.30.

This shows who your branch liaison is.



## Review of our GSA Website



This is your chance to have a say on our website. Have you looked at it lately? Do you use it? What would you like to see on it?

In 2024 we have a project to review our website. We would love to hear from you to get your ideas and feedback.

Email Lyn at [gensec@gsa.org.nz](mailto:gensec@gsa.org.nz) we look forward to hearing from you.



## Branch Christmas Functions

<b>Branch</b>	<b>Date</b>	<b>RSVP</b>
Auckland	6 December	auckland@gsa.org or call 0800 888 472
Bay of Plenty	29 November	bayofplenty@gsa.org.nz or phone 021-1106990
Canterbury Westland	4 December	cantywest@gsa.org.nz 0800 888 472
Gisborne	23 November	Gisborne@gsa.org.nz
Manawatū	28 November	Manawatu@gsa.org.nz.
Marlborough	27 November	Lyn.noel@xtra.co.nz
Nelson	12 December	wastneyd@xtra.co.nz or phone 545 7299 or 027 616 6071
Northland	22 November	Rex Morris, 435 4628 or 0800 888 472 northland@gsa.org.nz
Hawkes Bay	30 November	hawbay@gsa.org.nz 027 490 4784
Horowhenua Kapiti	Waikanae 23 November Levin 16 November	horo.kapiti@gsa.org.nz
Lake Taupo	23 November	crowesroost@xtra.co.nz, or by phoning 378-6627
Otago	6 December	otago@gsa.org.nz
Rotorua	17 November	Ian Simpson 07 3459 291
South Canterbury	23 November	helenpagenz@gmail.com 021 116 1449
Southland	11 December	027 311 0625 southland@gsa.org.
Taranaki	29 November	753 4998 or 021 0428268 taranaki@gsa.org.nz
Waikato KC	25 November	waikatokc@gsa.org.nz).
Whanganui	23 November	06 343 2789 jmbarcly10@gmail.com
Wellington	21 November	021 100 7080 wellington@gsa.org.nz



## ***Share your thoughts on proposed changes to the retirement villages sector!***



In August, the Government published a discussion paper on proposed changes to the Retirement Villages Act 2003, inviting you to share your thoughts.

It has been 20 years since the introduction of the Retirement Villages Act 2003, it is a good time to evaluate how it is working.

Te Tūāpapa Kura Kainga – the Ministry of Housing and Urban Development is welcoming feedback and submissions from retirement village residents, their families, potential residents,

operators, sector organisations, legal advisors, and anyone else with an interest in retirement villages.

The discussion paper looks at proposals related to the three main phases of retirement living – moving in, living in, and moving out.

Additionally, you're encouraged to submit your thoughts on other topics, such as the definition of retirement villages, culturally sensitive services, and insurance.

Making the decision to move into a retirement village is significant, which is why the government is working to ensure there is balance between the rights and responsibilities of retirement village residents and operators.

For more information on submitting your feedback, please visit the HUD website.  
<https://www.hud.govt.nz/our-work/retirement-villages-act-regulations-and-codes/>

The deadline for submissions is Monday, 20 November 2023

## ***New Staff in the National Office***

You may have noticed that there are two new staff in the National Office. Lyn Buxton who has replaced Gabe as the Executive Officer and Rachel Starkey who is the new Office Administrator. Gabe left us in August for some well-earned rest. We would like to thank Gabe for making our transition into the new roles an easy one. It was also lovely to meet some of you at the conference. We are still finding our feet but getting there.

### ***Executive Officer – Lyn Buxton***

I have been in the new role since June 2023. I am originally from Wellington, so it has been fantastic to come home.

I have spent the last few years living in New Plymouth with my husband John, our son Euan, and our very naughty dog Bruno. I have three grown up stepchildren, two of whom live in Wellington and one in Sydney. They are looking forward to having a babysitter on hand.

Euan is living in Wellington having just finished at Victoria University and John and Bruno are looking forward to the move once our house sells.

Prior to coming back to Wellington, I was working at the New Plymouth District Council in a variety of roles including Procurement and Finance, IT training, Project management and my last role was in Emergency management looking after business continuity and going out into the community to give advice and

training. I also volunteer during an emergency looking after all our lifeline utilities. These are things like power, Telecommunications, roading etc. I have been involved in several emergencies in Taranaki. Hopefully not too many while I am in Wellington!

In my spare time I teach speech and drama and am a keen crafter. Plus, my babysitting duties.

I am really enjoying the new role with the GSA. I love learning new things, so this role is perfect for me. No day is ever the same and I am especially looking forward to working with you all. Please feel free to drop into the office or give us a call, we are always happy to help.

## **Office Administrator – Rachel Starkey**

Tēnā koutou katoa - Hello everyone

For those who I have not met, I have been in the role of Office Administrator at the GSA National Office since the end of May. I have had the pleasure of meeting a number of you either in person, via email, or on the phone. I look forward to interacting with more of you over time.

A little bit about my work experience before coming to work at the GSA. I was previously at a busy corporate law firm working as a Legal Practice Coordinator. It was an interesting area to work in and I learnt a lot about Climate Change, Resource Management, and Infrastructure issues.

In my personal life, I am a busy mother of four boys who are 17, 19, 23 and 26. I also have rambunctious and creative 8-year-old stepdaughter and a beautiful 3-year-old granddaughter. I was born in Blenheim but have lived in Wellington since I was four. I love helping people, baking, and spending time with my family. Wishing you all a lovely festive season coming into Christmas and the New Year.

I am very excited to now be working with Lyn, who has come into the role of Executive Officer at the National Office. We work well together and hope to give you some consistency and the support you need both in the branches and as our members.

Nāku iti noa, nā

Rachel

# **YOUR MEMBERSHIP MATTERS**

## **Branch activities**

For more information about meetings and social functions, see your branch newsletter located in your branch web page [www.gsa.org.nz](http://www.gsa.org.nz) (click branches on the top menu), or **phone your branch secretary on 0800 888 472**. We urge you to participate.

*You can't help getting older, but  
you don't have to get old.*

George Burns

## **GSA website [www.gsa.org.nz](http://www.gsa.org.nz)**

The Association website provides an outline of the Government Superannuation Fund and National Provident Fund annuity schemes and the organisation. See above regarding Website refresh.

If you have suggestions relating to content you would find useful, please email the Executive Officer [gensec@gsa.org.nz](mailto:gensec@gsa.org.nz)

The Association's directory and national calendar are available on the website.

## Annuity Paydays

2023	2024	2025
19 Jan	18 Jan	16 Jan
16 Feb	15 Feb	13 Feb
16 Mar	14 Mar	13 Mar
13 Apr	11 Apr	10 Apr
11 May	9 May	8 May
8 Jun	6 Jun	5 Jun
6 Jul	4 Jul	3 Jul
3 Aug	1 Aug	31 Jul
31 Aug	29 Aug	28 Aug
28 Sep	26 Sep	25 Sep
26 Oct	24 Oct	23 Oct
23 Nov	21 Nov	20 Nov
21 Dec	19 Dec	18 Dec

### GSA freephone

0800 888 472

### Annuity administration:

**Datacom (GSF):** phone 0800 654731, or email [gsf@datacom.co.nz](mailto:gsf@datacom.co.nz)

**Datacom (NPF):** phone 0800 628776 or email

[npfenquiries@datacom.co.nz](mailto:npfenquiries@datacom.co.nz)

### Do we have your correct details?

If your details have changed, please phone 0800 888 472, send us an email or go to the members' section of our web site at

[www.gsa.org.nz](http://www.gsa.org.nz) to log in and fill out your details. You will need

your GSA password to access the member's section. Contact

[national@gsa.org.nz](mailto:national@gsa.org.nz) for your password if you don't have it handy.

**Remember to tell Datacom!**



## Please provide your e-mail address, if possible!

With another increase in postage these have had budget consequences for us all, including GSA. If you would now like to receive Annuity News and your Branch newsletter by email rather than post, contact Rachel our Office Administrator by email at [national@gsa.org.nz](mailto:national@gsa.org.nz), and she will arrange this for you.

	<b>Branch Secretary</b>	
Auckland	<b>Andrea Beechey</b>	<a href="mailto:auckland@gsa.org.nz">auckland@gsa.org.nz</a>
Bay of Plenty	<b>Jeannie Johansson</b>	<a href="mailto:bayofplenty@gsa.org.nz">bayofplenty@gsa.org.nz</a>
Canterbury Westland	<b>Janine Lynn</b>	<a href="mailto:cantywest@gsa.org.nz">cantywest@gsa.org.nz</a>
Gisborne	<b>Bruce Kells</b>	<a href="mailto:gisborne@gsa.org.nz">gisborne@gsa.org.nz</a>
Hawkes Bay	<b>Desmond Sullivan</b>	<a href="mailto:hawbay@gsa.org.nz">hawbay@gsa.org.nz</a>
Horowhenua Kapiti	<b>John Laurenson</b>	<a href="mailto:horo.kapiti@gsa.org.nz">horo.kapiti@gsa.org.nz</a>
Lake Taupo	<b>Colin Crowe</b>	<a href="mailto:taupo@gsa.org.nz">taupo@gsa.org.nz</a>
Manawatu	<b>Graham Poucher</b>	<a href="mailto:manawatu@gsa.org.nz">manawatu@gsa.org.nz</a>
Marlborough	<b>Mary Griffiths</b>	<a href="mailto:marlborough@gsa.org.nz">marlborough@gsa.org.nz</a>
Nelson	<b>Donna Abrams</b>	<a href="mailto:nelson@gsa.org.nz">nelson@gsa.org.nz</a>
Northland	<b>Rex Morris</b>	<a href="mailto:northland@gsa.org.nz">northland@gsa.org.nz</a>
Otago	<b>Robert Morey</b>	<a href="mailto:otago@gsa.org.nz">otago@gsa.org.nz</a>
Rotorua	<b>Ian Simpson</b>	<a href="mailto:rotorua@gsa.org.nz">rotorua@gsa.org.nz</a>
South Canterbury	<b>Helen Page</b>	<a href="mailto:southcant@gsa.org.nz">southcant@gsa.org.nz</a>
Southland	<b>Anne Gover</b>	<a href="mailto:southland@gsa.org.nz">southland@gsa.org.nz</a>
Taranaki	<b>Denyse Salisbury</b>	<a href="mailto:taranaki@gsa.org.nz">taranaki@gsa.org.nz</a>
Waikato KC	<b>John Evered</b>	<a href="mailto:waikatokc@gsa.org.nz">waikatokc@gsa.org.nz</a>
Whanganui	<b>Neil Elgar</b>	<a href="mailto:wanganui@gsa.org.nz">wanganui@gsa.org.nz</a>
Wellington	<b>Kay Monks</b>	<a href="mailto:wellington@gsa.org.nz">wellington@gsa.org.nz</a>

**Annuity News** is published by The Government Superannuitants Association of New Zealand Inc.

President: Alan Straker, Executive Officer: Lyn Buxton [gensec@gsa.org.nz](mailto:gensec@gsa.org.nz), +64-4-472 7006

PO Box 11993, Manners St, Wellington 6142 [www.gsa.org.nz](http://www.gsa.org.nz)